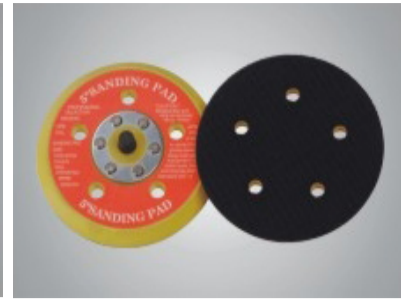
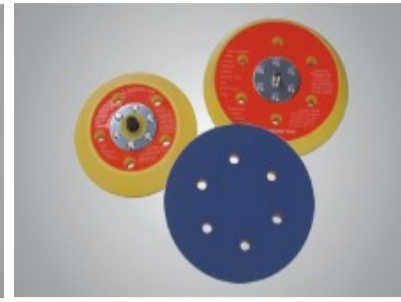
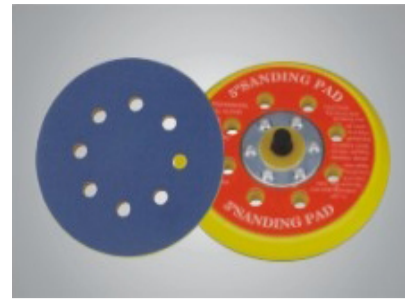


研磨砂带磨片

粘胶及拉绒磨片背托

PSA & Velcro Sanding Disc Back up Pads



AVAILABILITY

PRODUCT CODE:
VERSION OF PAD:
STYLE OF WORKING:

JAC-A216PB
Low-Profile Pads
PSA/ Dual Action

JAC-A217PB
Tapered Edge Pads
PSA/ Dual Action

JAC-A226VB
Low-Profile Pads
Velcro/Dual Action

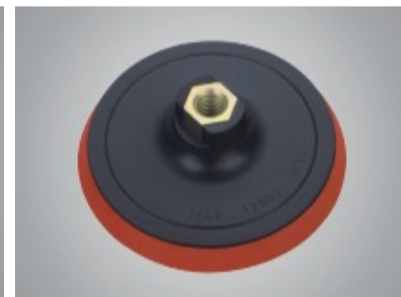
JAC-A227VB
Tapered Edge Pads
Velcro/Dual Action

SIZE (Diameter x Thread Shank)	SIZE (Diameter x Thread Shank)	MAX. RPM	STD PACK	PART #	PART #	PART #	PART #
1" x 1/4"-20 x NH	25 mm x 1/4"-20 x NH	12,000	10	21601	21701	22601	22701
2" x 5/16"-24 x NH	50 mm x 5/16"-24 x NH	12,000	10	21614	21714	22614	22714
3" x 5/16"-24 x NH	75 mm x 5/16"-24 x NH	12,000	10	21627	21727	22627	22727
3-1/2" x 5/16"-24 x NH	90 mm x 5/16"-24 x NH	12,000	10	21630	21730	22630	22730
5" x 5/16"-24 x NH	125 mm x 5/16"-24 x NH	12,000	10	21643	21743	22643	22743
5" x 5/16"-24 x 5H	125 mm x 5/16"-24 x 6H	12,000	10	21656	21756	22656	22756
5" x 5/16"-24 x 8H	125 mm x 5/16"-24 x 8H	12,000	10	21669	21769	22669	22769
6" x 5/16"-24 x NH	150 mm x 5/16"-24 x NH	10,000	10	21672	21772	22672	22772
6" x 5/16"-24 x 6H	150 mm x 5/16"-24 x 6H	10,000	10	21685	21785	22685	22785
6" x 5/16"-24 x 8H	150 mm x 5/16"-24 x 8H	10,000	10	21698	21798	22698	22798
8" x 5/8"-11 x NH	180 mm x 5/8"-11 x NH	4,800	10	21701	21801	22701	22801
8" x 5/8"-11 x 8H	180 mm x 5/8"-11 x 8H	4,800	10	21714	21814	22714	22814

研磨砂带磨片

粘胶及拉绒磨片背托

Velcro Sanding Disc Back up Pads



AVAILABILITY

PRODUCT CODE:
VERSION OF PAD:
STYLE OF WORKING:

JAC-A236VB
Low-Profile Pads
Velcro

JAC-A237VB
Tapered Edge Pads
Velcro

JAC-A238VB
Low-Profile Pads
Velcro/EVA 2 mm

JAC-A239VB
Tapered Edge Pads
Velcro/EVA 10 mm

SIZE (Diameter x Thread Hole)	SIZE (Diameter x Thread Hole)	MAX. RPM	STD PACK	PART #	PART #	PART #	PART #
4" x M10-1.25	100 mm x M10-1.25	12,000	10			23801	23901
4" x M10-1.5	100 mm x M10-1.5	12,000	10			23814	23914
4" x M14-2	100 mm x M14-2	12,000	10			23827	23927
4-1/2" x M10-1.5	115 mm x M10-1.5	12,000	10	23601	23701	23830	23930
4-1/2" x M14-2	115 mm x M14-2	12,000	10	23614	23714	23843	23943
4-1/2" x 5/8"-11 NC	115 mm x 5/8"-11 NC	12,000	10	23627	23727	23856	23956
5" x M10-1.5	125 mm x M10-1.5	12,000	10	23630	23730	23869	23969
5" x M14-2	125 mm x M14-2	12,000	10	23643	23743	23872	23972
5" x 5/8"-11 NC	125 mm x 5/8"-11 NC	12,000	10	23656	23756	23885	23985
6" x M14-2	150 mm x M14-2	10,000	10	23669	23769	23898	23998
6" x M16-2	150 mm x M16-2	10,000	10	23672	23772	23901	24001
6" x 5/8"-11 NC	150 mm x 5/8"-11 NC	10,000	10	23685	23785	23914	24014
8" x M14-2	180 mm x M14-2	4,800	10	23698	23798	23927	24027
8" x M16-2	180 mm x M16-2	10,000	10	23701	23801	23930	24030
8" x 5/8"-11 NC	180 mm x 5/8"-11 NC	4,800	10	23714	23814	23943	24043